



WSGF

FOREST SORTING GRAPPLE



The **WSGF grapple** is ideal for **log handling** and any other type of **sorting** and **picking** activities.

It has a configuration with **4+3 teeth** (comb configuration), which allows it to clamp the material safely and have full control during all jobs. The tapered teeth easily penetrate the accumulation of logs or twigs, grab and move them, thus ensuring a firm grip.

Thanks to the combination with the **Supersaw® chainsaw** by Hultdins and the several types of rotation proposed, this grapple is also useful for cutting logs and shrubs in any forest area. The quick coupling/release system, combined with the chainsaw kit, makes the equipment particularly versatile.



All the hydraulic parts are protected by the frame, to avoid breakage due to impacts or the insertion of branches.

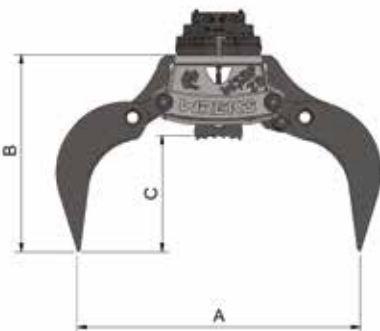
- Available in four models for excavators from 15 to 50 tons

Optional:

- Available with different hydraulic rotation models (see page 14)
- Centering support
- SuperSaw 550 10-19cc and 650 40cc chainsaw kit
- Chainsaw support kit with quick coupling



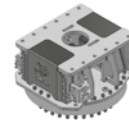
Example of Forest Sorting Grapple with application of Chainsaw kit and Turning table



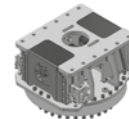
OPTIONAL



ROTATION XRI



RIGID ROTATION
2 MOTORS



RIGID ROTATION
4 MOTORS



360° SCREW ROTATION



CENTERING
SUPPORT



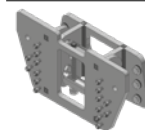
SUPERSAW 550-10CC



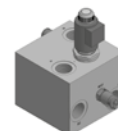
SUPERSAW 550-19CC



SUPERSAW 650S-40CC



CHAINSAW SUPPORT KIT
WITH QUICK COUPLING



DIVERTER SOLENOID
VALVE BLOCK



MODEL

		WSGF15	WSGF25	WSGF30	WSGF40
Excavator	ton	15 - 25	20 - 30	25 - 40	30 - 50
Basic equipment weight	kg	610	870	1600	on demand
Teeth	n°	4 + 3	4 + 3	4 + 3	on demand
A	mm	1220	1610	2020	on demand
B	mm	1080	1110	1535	on demand
C	mm	680	700	980	on demand
D	mm	830	850	1170	on demand
E	mm	790	850	1000	on demand
F	mm	610	750	875	on demand
G	mm	850	1140	1360	on demand
Strength	ton	4	7	9	on demand
Minimum diameter	mm	90	110	150	on demand

OPTIONAL

• Rotation XRI

Weight	kg	185	185	342	on demand
--------	----	-----	-----	-----	-----------

• Rigid rotation 2 motors

Weight	kg	200	250	300	on demand
--------	----	-----	-----	-----	-----------

• Rigid rotation 4 motors

Weight	kg	250	300	350	on demand
--------	----	-----	-----	-----	-----------

• 360° screw rotation

Weight	kg	320	350	/	/
--------	----	-----	-----	---	---

• Centering support

Weight	kg	15	15	34	on demand
--------	----	----	----	----	-----------

• Supersaw 550-10cc

Weight	kg	102	102	/	/
--------	----	-----	-----	---	---

• Supersaw 550-19cc

Weight	kg	105	105	/	/
--------	----	-----	-----	---	---

• Supersaw 650-40cc

Weight	kg	/	/	250	on demand
--------	----	---	---	-----	-----------

• Chainsaw support kit with quick coupling

Weight	kg	30	30	60	on demand
--------	----	----	----	----	-----------

• Diverter solenoid valve block

Weight	kg	1,5	1,5	on demand	on demand
--------	----	-----	-----	-----------	-----------





#FollowTheFox



WREKO
ADVANCED SOLUTION TOOLS

 **WREKO s.r.l.**
Via Rovigo, 21
35042 Este (PD)

 +39 0429 176 07 94 

 info@wreko.com

www.wreko.com